



# GRAY TOOLS

PROUDLY CANADIAN  FIÈREMENT CANADIEN

# Professional Tools Special Fall 2024

Offers expire December 31, 2024



93120

## 12 Drawer Top Chest - PRO+ Series

- 26" x 18¾" x 21"
- Capacity: 6,997 cu. in.
- List \$1,510.87

**\$803<sup>95</sup>**



99808SB

## 8 Drawer Top Chest - Marquis Series

- 26" x 16" x 19¼"
- Capacity: 5,453 cu. in.
- List \$1,326.79

**\$705<sup>95</sup>**



93211

## 11 Drawer Roller Cabinet PRO+ Series

- 26½" x 19" x 42"
- Capacity: 11,307 cu. in.
- List \$2,055.14

**\$1,093<sup>95</sup>**



99507SB

## 7 Drawer Roller Cabinet - Marquis Series

- 26½" x 18" x 39½"
- Capacity: 9,147 cu. in.
- List \$1,783.63

**\$948<sup>95</sup>**



99113SB

## 13 Drawer Roller Cabinet - Marquis Series

- 53¾" x 24" x 39½"
- Capacity: 25,500 cu. in.
- List \$7,774.77

**\$4,136<sup>95</sup>**

### Pro+ Series Toolbox Features:

- 100 lbs bearing slides on all drawers.
- Completely redesigned locking system with tubular key and steel double hook engagement system.
- Smooth and quiet rolling premium 5" x 2" casters with precision sealed bearings and 360° top brake.
- Heavy-duty 18 gauge steel frame for superior durability.
- Drawer liners included on all models.
- Scratch and corrosion resistant powder coat paint finish.
- Redesigned side handle that makes moving roller cabinets easier and more comfortable.

### Marquis Series Toolbox Features:

- Safety latch system prevents drawers from accidentally opening.
- Heavy-duty roller bearing slides allow heavily loaded drawers to open and close with ease.
- Industrial black wrinkle finish offers superior scratch and fade resistance.
- Drawer liners included.
- Heavy gauge steel construction for greater load ratings and storage capacities.
- Premium quality casters with greater load ratings allow easier movement on all surfaces.
- Oval handles on roller cabinets allow comfortable gripping and maneuvering.
- Heavy-duty lifting handles with 90° stop for easy lifting of top chests.
- Gas shocks assist in opening and closing lids on top chests (41½" & 53¾" models only).



**35038DH**  
**38 Piece 1/2" Drive SAE & Metric Socket & Attachment Set**

- 12 Point
  - Reg: 3/8" - 1 1/8", 1 1/4"
  - Reg: 10-24, 27, 30, 32mm
  - 40 Tooth Ratchet
  - 2", 5" & 10" Extension
  - 15" Flex Handle
  - U-Joint
- List \$1,016.64  
**\$653<sup>95</sup>**



**35057**  
**7 Piece 1/2" Drive SAE Double Square Impact Socket Set**

- 3/8", 7/16", 1/2", 9/16", 5/8", 11/16", 3/4"
  - 8 Pt., Black industrial finish with socket bar
- List \$148.19  
**\$94<sup>95</sup>**



**PL13T**  
**13 Piece 1/2" Dr. SAE Deep Impact Socket Set**

- 1/2" - 1 1/4"
  - 6 Pt., Black industrial finish with socket bar.
- List \$399.13  
**\$256<sup>95</sup>**



**29026**  
**26 Piece 3/8" Dr. 6 Point Standard & Deep Metric Socket & Attachment Set**

- Standard 9, 10, 11, 12, 13, 14, 15, 16, 17, 18, 19mm
  - Deep 9, 10, 11, 12, 13, 14, 15, 16, 17, 18, 19mm
  - Reversible Ratchet
  - U-Joint
  - 3" & 6" Extension
- List \$573.29  
**\$368<sup>95</sup>**



**25708**  
**8 Piece 3/8" Dr. Torx® Hex Head Socket Set**

- T15, T20, T25, T27, T30, T40, T45, T50
  - Mirror chrome finish with socket bar
- List \$175.10  
**\$112<sup>95</sup>**



**P8T**  
**8 Piece 3/8" Dr. Standard SAE Impact Socket Set**

- 5/16" - 3/4"
  - 6 Pt., Industrial black finish with socket bar
- List \$88.87  
**\$57<sup>95</sup>**

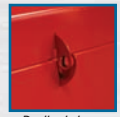
**46805**  
**5 Piece 3/4" Dr. Metric Hex Head Socket Set**

- 14, 17, 19, 22, 24mm
  - Precision tip ensures a tight and secure fit with the fastener.
  - Industrial black finish with socket bar
- List \$416.85  
**\$267<sup>95</sup>**



**9120**  
**20" Heavy Duty Tool Box**

- 20" x 8 1/2" x 9 1/2"
  - Capacity: 1,621 cu. in.
  - Tote tray included
- List \$125.45  
**\$66<sup>95</sup>**



Padlock hasp



**Speeders**

- Chrome finish for maximum resistance against corrosion.
- Diamond knurled grip for a more secure grip.

	Drive	Length	List	
<b>T9</b>	3/8"	16 1/4"	\$51.55	<b>\$33<sup>95</sup></b>
<b>686</b>	1/2"	19 1/4"	\$87.38	<b>\$56<sup>95</sup></b>



**Flex Handles**

- Chrome finish for maximum resistance against corrosion.
- Spring-loaded ball ensures a positive lock with socket.

	Drive	Finish	Length	List	
<b>V26</b>	1/4"	Mirror Chrome	5 1/2"	\$43.48	<b>\$27<sup>95</sup></b>
<b>T30</b>	3/8"	Mirror Chrome	9"	\$49.51	<b>\$31<sup>95</sup></b>
<b>653</b>	1/2"	Mirror Chrome	15"	\$99.37	<b>\$63<sup>95</sup></b>
<b>653L</b>	1/2"	Mirror Chrome	18"	\$100.26	<b>\$64<sup>95</sup></b>
<b>4288</b>	3/4"	Mirror Chrome	21"	\$165.10	<b>\$106<sup>95</sup></b>
<b>X106</b>	1"	Satin Chrome	26"	\$462.64	<b>\$297<sup>95</sup></b>



**Side Cutting Pliers with Vinyl Grips**

	Jaw Length	Overall Length	List	
B245B	3/4"	5 3/4"	\$45.96	<b>\$29<sup>95</sup></b>
B246B	3/4"	7"	\$56.06	<b>\$36<sup>95</sup></b>
B247B	3/4"	8"	\$59.16	<b>\$38<sup>95</sup></b>
B249B	3/4"	10"	\$86.56	<b>\$54<sup>95</sup></b>



**45° Curved Needle Nose Pliers with Cutter**

	Jaw Length	Overall Length	List	
B238B	2"	6 1/4"	\$44.34	<b>\$28<sup>95</sup></b>
B239B	2 3/4"	8"	\$56.04	<b>\$36<sup>95</sup></b>



**Straight Needle Nose Pliers with Cutter and Vinyl Grips**

	Jaw Length	Overall Length	List	
B230B	1 1/2"	5 3/4"	\$45.42	<b>\$29<sup>95</sup></b>
B231B	2"	6 1/4"	\$46.67	<b>\$29<sup>95</sup></b>

- Needle nose design allows for improved reach and access in confined space applications.



**Hose Pinch Off Pliers**

	Overall Length	O.D. Capacity	List	
89855	9 1/4"	1 1/4"	\$58.04	<b>\$37<sup>95</sup></b>
89856	14"	2 1/2"	\$120.08	<b>\$77<sup>95</sup></b>



**Lineman's Pliers with Cutter and Vinyl Grips**

	Jaw Length	Overall Length	List	
B210B	1"	6 1/4"	\$54.20	<b>\$34<sup>95</sup></b>
B212B	1 1/4"	7"	\$58.94	<b>\$37<sup>95</sup></b>
B214B	1 3/8"	8"	\$64.06	<b>\$41<sup>95</sup></b>
B218B	1 5/8"	9"	\$73.55	<b>\$47<sup>95</sup></b>

- Precisely machined serrated teeth
- Quick and clean cuts
- Handle design delivers excellent cutting power



**Duck Bill Pliers with Serrated Jaw**

	Overall Length	Jaw Length	List	
B295A	8"	1 3/8"	\$48.97	<b>\$31<sup>95</sup></b>



- Precision HRC44 blades are designed to deliver maximum service life
- Cutting blades are fully replaceable
- Ideal for smooth cutting of rod, wire mesh, concrete form ties and rebar, cables and bolts
- Large, anti slip ergonomic handles provide efficient power transfer and controlled cutting

**Heavy Duty Bolt Cutters**

	Overall Length	Medium HRC 40	Hard HRC 44	List	
BC114A	13"	3/16"	-	\$121.91	<b>\$78<sup>95</sup></b>
BC118A	18"	1/4"	3/16"	\$179.80	<b>\$114<sup>95</sup></b>
BC124A	24"	5/16"	1/4"	\$229.90	<b>\$147<sup>95</sup></b>
BC130A	30"	3/8"	5/16"	\$303.42	<b>\$194<sup>95</sup></b>
BC136A	36"	7/16"	3/8"	\$379.58	<b>\$244<sup>95</sup></b>

**BK-SET5-89**

**5 Piece General Service Set**

Set Includes:

- 10" Locking Pliers - Straight Jaws
- 10" Locking Pliers - Curved Jaws
- 7" Locking Pliers - Curved Jaws with Wire Cutter
- 6" Locking Pliers - Long Nose
- 5" Locking Pliers - Curved Jaws
- Includes storage bag
- Epoxy resin coated
- Piano wire spring
- Drop forged jaws
- No pinch release lever

List \$216.80

**\$139<sup>95</sup>**



**83306**

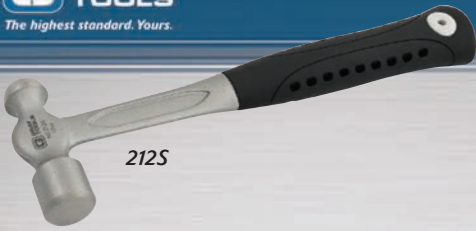
**6 Piece Snap Ring Convertible Pliers Set**

- Convertible from internal to external or vice versa without removing or tightening screws.
- Fixed tips are precision formed and hardened for accurate fit and long wear.
- Large cushion grips.
- Spring loaded to reduce fatigue.
- Includes plastic case

List \$319.15

**\$204<sup>95</sup>**





212S

### Ball Pein Hammers

	Head Weight	Overall Length	List	
208S	8 oz.	11"	\$46.19	<b>\$29<sup>95</sup></b>
212S	12 oz.	11"	\$49.25	<b>\$31<sup>95</sup></b>
216S	16 oz.	13"	\$65.72	<b>\$42<sup>95</sup></b>
224S	24 oz.	14"	\$73.14	<b>\$47<sup>95</sup></b>
232S	32 oz.	15"	\$81.27	<b>\$52<sup>95</sup></b>

- Forged one piece construction.
- Anti-vibration handle reduces fatigue.



PH61S

### Club Hammers

	Head Weight	Overall Length	List	
PH60S	2½ lbs	11"	\$69.48	<b>\$44<sup>95</sup></b>
PH61S	4 lbs	11"	\$79.91	<b>\$51<sup>95</sup></b>

- Forged one piece construction
- Anti-vibration handle reduces fatigue.



### Rubber Mallet

	Head Diameter	Overall Length	List	
PH30	2½"	16½"	\$72.48	<b>\$46<sup>95</sup></b>

- Non-marring, double-faced rubber head.



CF143

### Inspection Mirrors

	Description	Length	List	
CF143	Pocket Circular with Clip, 1¼"	8"	\$16.41	<b>\$9<sup>95</sup></b>
CF144	Pocket Circular with Clip, 7/8"	7½"	\$16.41	<b>\$9<sup>95</sup></b>
CF145	Pocket Oval with Clip, 1" x 2"	8½"	\$16.41	<b>\$9<sup>95</sup></b>



CF146



CF147



89905

### Telescopic Inspection Mirrors

	Description	Length	List	
CF146	Circular, 2¼"	10 - 14"	\$24.19	<b>\$14<sup>95</sup></b>
CF147	Rectangular: 2½" x 3½"	11¼"-15¼"	\$24.19	<b>\$14<sup>95</sup></b>
89905	Square: 1¾" x 1¾"	9"-35½"	\$30.90	<b>\$19<sup>95</sup></b>



C673

### 3 Piece Pinch Bar Set

- Lengths: 18", 24", 30"
- Nickel plated finish.
- Round shank.

List \$238.62

**\$153<sup>95</sup>**



73903

### 3 Piece Acetate Handle Pry Bar Set

- Lengths: 13", 18¼", 24¼"
- Nickel plated blades.

List \$164.50

**\$104<sup>95</sup>**



73913

### 3 Piece Orange Handle Pry Bar Set

- Overall Lengths: 13", 18¼", 24¼"
- Black oxide blades
- Includes plastic tray

List \$157.86

**\$101<sup>95</sup>**



C5PPS

### 5 Piece Pin Punch Set

- 1/8", 5/32", 3/32", 3/16", 1/4"
- In a pouch.

List \$76.53

**\$49<sup>95</sup>**



C49LR

### 5 Piece Punch & Chisel Set

- Flat Chisel: ½", ¾"
- Pin Punch: ⅛", ⅜"
- Centre Punch: ⅜"

List \$87.37

**\$56<sup>95</sup>**



SE70C

### 7 Piece Straight Type Extractor Set

- Screw, bolt or stud size: ¼", ⅜", 7/16", ½", ⅝", ¾", 7/8"

List \$153.72

**\$98<sup>95</sup>**

**MC214**  
**14 Piece Metric Combination Wrench Set**

- 7mm - 32mm
- 12 Pt., Mirror chrome finish.
- Includes gripper organizer.

List \$935.82  
**\$601<sup>95</sup>**



# Gray Crowfoot Wrenches

- Ideal where a traditional wrench or ratchet cannot reach.
- Precision machined for a tight and secure fit.
- Mirror chrome finish for maximum resistance against corrosion.

**59704A**  
**4 Piece SAE Double Box Fixed Head Multigear™ Geared Wrench Set**

- 5/16" x 3/8", 7/16" x 1/2", 9/16" x 5/8", 11/16" x 3/4"
- Stainless steel construction
- Includes gripper organizer.

List \$254.66  
**\$163<sup>95</sup>**



**63910**  
**10 Piece 3/8" Dr. Metric Flare Nut Crowfoot Wrench Set**

- 10mm - 19mm
- Includes socket bar

List \$154.47  
**\$99<sup>95</sup>**



**65908**  
**8 Piece 1/2" Dr. SAE Flare Nut Crowfoot Wrench Set**

- 13/16" - 1 1/4"
- Includes socket bar

List \$473.82  
**\$304<sup>95</sup>**



**MRB50**  
**5 Piece Metric Ratcheting Box Wrench Set**

- 6 Pt.: 7 x 8mm to 13 x 14mm
- 12 Pt.: 15 x 17mm
- Single & double hex flat style
- Chrome finish
- Includes gripper organizer

List \$241.55  
**\$154<sup>95</sup>**



**697513**  
**13 Piece Metric Long Arm Ball S<sub>2</sub> Hex Key Set**

- 1.5, 2, 2.5, 3, 4, 5, 5.5, 6, 8, 10, 12, 14, 17mm
- Includes metal storage case

List \$152.69  
**\$98<sup>95</sup>**

*Ball-end for greater accessibility.*



**59706A**  
**6 Piece Metric Multigear™ Ratcheting Wrench Double Box Fixed Head**

- 8 x 9mm, 10 x 11mm, 12 x 13mm, 14 x 15mm, 16 x 18mm, 17 x 19mm
- Stainless steel construction
- Includes gripper organizer.

List \$368.91  
**\$237<sup>95</sup>**



**698513**  
**13 Piece SAE Long Arm Ball S<sub>2</sub> Hex Key Set**

- 1/16", 5/64", 3/32", 1/8", 5/32", 3/16", 7/32", 1/4", 5/16", 3/8", 1/2", 9/16", 5/8"
- Includes metal storage case

List \$151.47  
**\$97<sup>95</sup>**

**Up to 33% more torque than ordinary keys.**

**68713XL**  
**13 Piece SAE Extra Long Arm S<sub>2</sub> Hex Key Wrench Set**

- 0.05" - 3/8"

List \$36.92  
**\$23<sup>95</sup>**



**68709XL**  
**9 Piece Metric Extra Long Arm S<sub>2</sub> Hex Key Wrench Set**

- 1.5mm - 10mm

List \$35.05  
**\$22<sup>95</sup>**



**SCD6**

**6 Piece Assorted Screwdriver Set**

- Slotted 8 1/4" & 10 1/4" long
- Square Recess No. 1, 9 3/4" long
- Square Recess No. 2, 9 3/4" long
- Phillips® No. 1, 6 3/4" long
- Phillips® No. 2, 8 1/4" long

List \$111.15  
**\$71<sup>95</sup>**



**TXS7A**

**7 Piece Heavy-Duty Comfort Grip Torx® Screwdriver Set**

- Sizes: T8, T10, T15, T20, T25, T27, T30
- Industrial grade alloy on hex shank steel blade.
- Full length blade with hex bolster goes through handle to end cap.
- Tip style and size etched on end cap.
- Includes plastic tray.

List \$108.07  
**\$69<sup>95</sup>**



**CHS7A**

**7 Piece SAE Nut Driver Set**

- Sizes: 3/16", 1/4", 5/16", 11/32", 3/8", 7/16", 1/2"
- Color-coded handles make identifying the needed size quicker and easier.
- Chrome plated blades for maximum resistance against corrosion.
- Go through shank accommodates long length bolts.
- In a canvas roll.

List \$149.43

**\$96<sup>95</sup>**



**CHS7MA**

**7 Piece Metric Nut Driver Set**

- Sizes: 5-11mm
- In a canvas roll
- Chrome plated blades for maximum resistance against corrosion.

List \$140.90  
**\$89<sup>95</sup>**



**92460**

**Pocket Screwdriver with Clip**

- 3" long blade
- 5 1/2" overall length

List \$7.24  
**\$4<sup>95</sup>**



**IMD208K**

**6 Piece Impact Driver & Attachment Set**

- 3/8" square drive impact driver.
- 5/16" hex bit adapter.
- No. 2 & 3 Phillips®, 1 7/16" long
- 5/16" & 3/8" Slotted 1 7/16" long.

List \$154.05  
**\$99<sup>95</sup>**



**2612HS**  
**6" Blade Mini Hacksaw**  
List \$20.01  
**\$12<sup>95</sup>**

**838**

**Scraper**

- Overall length 7 1/2"
- Blade width 1 1/4"

List \$22.17  
**\$14<sup>95</sup>**



**66042**  
**Plastic Pipe and Tube Cutter**  
• Capacity – Cuts up to 1 5/8" O.D.  
• Ideal for cutting PE, PP, PB, PEX, PPR, MLP/MSR, VPE, CPVC, PVC, PVDF  
• Quick blade change – no tools required  
List \$115.37  
**\$74<sup>95</sup>**



**66063**  
**Plastic Pipe and Tube Cutter**  
• Capacity – Cuts up to 2 1/2" O.D.  
• Ideal for cutting PE, PP, PB, PEX, PPR, MLP/MSR, VPE, CPVC, PVC, PVDF  
• Quick blade change – no tools required  
List \$171.16  
**\$109<sup>95</sup>**



**213**  
**Auto-Retracting Utility Knife**  
• Automatic blade return into housing for increased safety.  
• Diecast light weight design for strength and durability.  
• Ergonomic design for a comfortable hand grip.  
• Works with most standard replacement blades.  
List \$22.81  
**\$14<sup>95</sup>**



**P293**  
**Puller Bearing Separator Set**  
 • 5 ton capacity  
 • Includes: 2 bearing separators: 2" and 3", puller, forged screw bolts and extensions.  
 • Includes blow molded carrying case  
 List \$337.31  
**\$216<sup>95</sup>**

**PO12L**  
**Adjustable 2/3 Jaw Puller**  
 • 7 Ton capacity  
 • 8<sup>3</sup>/<sub>4</sub>" Maximum reach  
 • 11" Maximum spread  
 • Jaw adjustment holes allow the reach to be customized to suit the application.  
 List \$324.46  
**\$208<sup>95</sup>**



**Heavy Duty 2 Jaw Pullers**

	Capacity	Reach	Spread	List	
<b>P202T</b>	2 Ton	3"	3/4" - 4 1/2"	\$170.60	<b>\$109<sup>95</sup></b>
<b>P205T</b>	5 Ton	5 1/2"	1" - 9 1/2"	\$278.48	<b>\$179<sup>95</sup></b>
<b>P210T</b>	10 Ton	9"	1 1/16" - 15"	\$596.83	<b>\$383<sup>95</sup></b>



P210T



**PO11**  
**Reversible 2/3 Jaw Puller**  
 • 5 Ton capacity  
 • 3 1/4" Maximum reach  
 • 7" Maximum spread  
 • Reversible jaws permit external or internal pulling.  
 List \$203.92  
**\$131<sup>95</sup>**



VS150

**Forged Combination Pipe Vises**

	Jaw Width	List	
<b>VS150</b>	150mm	\$848.39	<b>\$544<sup>95</sup></b>
<b>VS200</b>	200mm	\$1,130.30	<b>\$726<sup>95</sup></b>

- Equipped with permanent pipe jaws for holding pipes & tubes.
- Heavy duty hardened serrated jaws.
- Optional swivel base available.
- 92,000+ PSI

**PO10A**  
**Adjustable & Reversible 2/3 Jaw Puller**  
 • 2 Ton capacity  
 • 3 3/8" Maximum reach  
 • 4 3/4" Maximum spread  
 List \$139.11  
**\$89<sup>95</sup>**

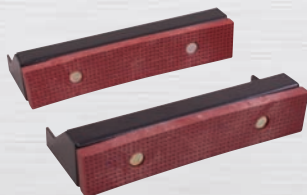


**FG2**  
**25 Blade Feeler Gauge**



• Thickness, inches: .0015, .002, .003, .004, .005, .006, .007, .008, .009, .010, .011, .012, .013, .014, .015, .016, .018, .020, .022, .024, .025, .028, .030, .032, .035  
 • 3" x 1/2" blades  
 • Stainless steel blades  
 List \$44.93  
**\$28<sup>95</sup>**

**Fiber Grip Jaws (pair)**



	Jaw width	List	
<b>VS4-FGJAW</b>	4.5"	\$52.83	<b>\$33<sup>95</sup></b>
<b>VS5-FGJAW</b>	5"	\$62.67	<b>\$39<sup>95</sup></b>
<b>VS6-FGJAW</b>	6"	\$69.19	<b>\$44<sup>95</sup></b>
<b>VS8-FGJAW</b>	8"	\$75.64	<b>\$48<sup>95</sup></b>

**FG35A**  
**35 Blade Feeler Gauge**



• Full Range: .0015, .002, .003, .004, .005, .006, .007, .008, .009, .010, .011, .012, .013, .014, .015, .016, .017, .018, .019, .020, .021, .022, .023, .024, .025, .026, .027, .028, .029, .030, .031, .032, .033, .034, .035  
 • 3" x 1/2" blades  
 List \$78.42  
**\$49<sup>95</sup>**



91942

### 42 Piece Rethreading Kit

- 19 taps, 21 dies of NC, NF & metric sizes including 2 thread files.

List \$231.55  
**\$148<sup>95</sup>**



92340

### 40 Piece SAE Alloy Tap and Die Set

- Contains: 1" O.D. round dies: 4-40, 6-32, 8-32, 10-24, 10-32, 12-24, 1/4"-20, 1/4"-28, 5/16"-18, 5/16"-24, 3/8"-16, 3/8"-24, 7/16"-14, 7/16"-20, 1/2"-13, 1/2"-20, 1/8"-27 NPT
- 1 Die Stock, 1 Screw Pitch Gauge, 2 Tap Wrenches and 1 Screwdriver.
- Specially heat-treated alloy steel dies deliver superior durability and longer service life.

List \$302.29  
**\$194<sup>95</sup>**

89656

### 8 Piece I.S.O. Metric Bubble Flaring Tool Set

- 4 dies, yoke assembly, bar assembly, reamer and wrench.

List \$182.95  
**\$117<sup>95</sup>**

RF163

### 8 Piece Double Flaring Tool Set

- 5 dies, 3/16", 1/4", 5/16", 3/8", 1/2" O.D. tubing, yoke assembly, bar assembly, handle

List \$144.05  
**\$92<sup>95</sup>**



86025A

### 26 Foot Measuring Tape With Auto Lock

- 1" (25mm) wide powder coated nylon blade for superior durability
- Easy to read SAE and metric graphics
- Grappling hook
- Belt clip

List \$45.05  
**\$28<sup>95</sup>**



840

### Wire Brush

- Overall length 14"

List \$9.85  
**\$6<sup>95</sup>**



### Digital Calipers - Metal Housing

Range List

DC6150 0 - 6"/0 - 150mm \$146.50 **\$94<sup>95</sup>**

DC8200 0 - 8"/0 - 200mm \$212.54 **\$136<sup>95</sup>**



89703

### Industrial Duty Circuit Tester Light

- 6 / 12 / 24 volt systems.
- 60" Rubber lead wire.
- Indicator bulb lights if circuit is functioning.
- Heavy-duty alligator clip.

List \$29.47  
**\$18<sup>95</sup>**



92129

### 29 Piece SAE Cobalt High Speed Steel Drill Bit Set

- 1/16" - 1/2" x 64ths
- Jobber length 135° split point,
- Grade: M35 Steel, Spec. NAS 907J
- Packaged in plastic case.

List \$460.83  
**\$296<sup>95</sup>**



### Plastic Socket Organizers

- Holds regular & deep sockets

Description List

91401 1/4" Dr. SAE \$34.47 **\$21<sup>95</sup>**

91402 1/4" Dr. Metric \$34.47 **\$21<sup>95</sup>**

93801 3/8" Dr. SAE \$33.29 **\$21<sup>95</sup>**

93802 3/8" Dr. Metric \$33.29 **\$21<sup>95</sup>**

91201 1/2" Dr. SAE \$40.22 **\$24<sup>95</sup>**

91202 1/2" Dr. Metric \$40.22 **\$24<sup>95</sup>**